

**Irrigation**

Qty	Symbol	Description	Pressure	Flow	Radius
<b>Sprinklers</b>					
1	●	Hunter 10A-180 - SRS-04	30 psi	0.98 gpm	10 ft
7	●	Hunter 10H - SRS-04	30 psi	0.82 gpm	10 ft
1	●	Hunter 12A-270 - SRS-04	30 psi	1.89 gpm	12 ft
2	●	Hunter 12F - SRS-04	30 psi	2.65 gpm	12 ft
6	●	Hunter 12H - SRS-04	30 psi	1.31 gpm	12 ft
5	●	Hunter 12Q - SRS-04	30 psi	0.33 gpm	12 ft
3	●	Hunter 15H - SRS-04	30 psi	1.88 gpm	15 ft
2	●	Hunter 15Q - SRS-04	30 psi	0.93 gpm	15 ft
12	●	Hunter 5H - SRS-04	30 psi	0.23 gpm	5 ft
4	●	Hunter 5Q - SRS-04	30 psi	0.12 gpm	5 ft
4	●	Hunter 6H - SRS-12	30 psi	0.98 gpm	6 ft
3	●	Hunter 6Q - 1804	30 psi	0.51 gpm	6 ft
4	●	Hunter 8A-180 - SRS-04	30 psi	0.98 gpm	8 ft
1	●	Hunter 8H - SRS-04	30 psi	0.48 gpm	8 ft
1	●	Hunter 8Q - SRS-04	30 psi	0.24 gpm	8 ft
2	●	Hunter LCS-515 - SRS-04	30 psi	0.85 gpm	15 x 5 ft
5	●	Hunter M5BN-50H - SRS-12	30 psi	0.5 gpm	0 ft
4	●	Hunter PGP-02 - PGP-ADJ	50 psi	0.9 gpm	30 ft
4	●	Hunter PGP-05 - PGP-ADJ	50 psi	2 gpm	38 ft
6	●	Hunter SS-630 - SRS-04	30 psi	1.3 gpm	30 x 5 ft

**Water Source**

1	Ⓜ	3/4 inch meter
---	---	----------------

**Backflow Devices**

1	Ⓢ	Febco 660 - 1"
---	---	----------------

**Control Valves**

8	Ⓢ	Hunter SRV-100G-S
---	---	-------------------

**Irrigation Accessories**

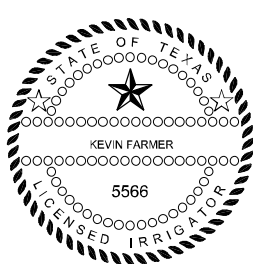
1	Ⓢ	Hunter MINI-CLIK
1	Ⓢ	Hunter PC-900
1	Ⓢ	Nibco 1" isolation valve

**Lateral Line Pipe**

726.74 ft	Class 315 1/2"
45.41 ft	Class 200 3/4"
4.19 ft	Class 160 1"

**Mainline Pipe**

280.92 ft	Class 200 1"
-----------	--------------



**Sprinkler Zone Data**

Zone #	Total Area	Total Flow	Precip Rate
1	958.37 Sq/Ft	16.75 gpm	1.63 in/hr
2	815.59 Sq/Ft	12.49 gpm	1.62 in/hr
3	1561.34 Sq/Ft	5.8 gpm	0.54 in/hr
4	1539.55 Sq/Ft	5.8 gpm	0.52 in/hr
5	857.04 Sq/Ft	12.46 gpm	1.59 in/hr
6	336.02 Sq/Ft	9.1 gpm	5.23 in/hr
7	109.63 Sq/Ft	5.45 gpm	6.01 in/hr

**Drip Zone Data**

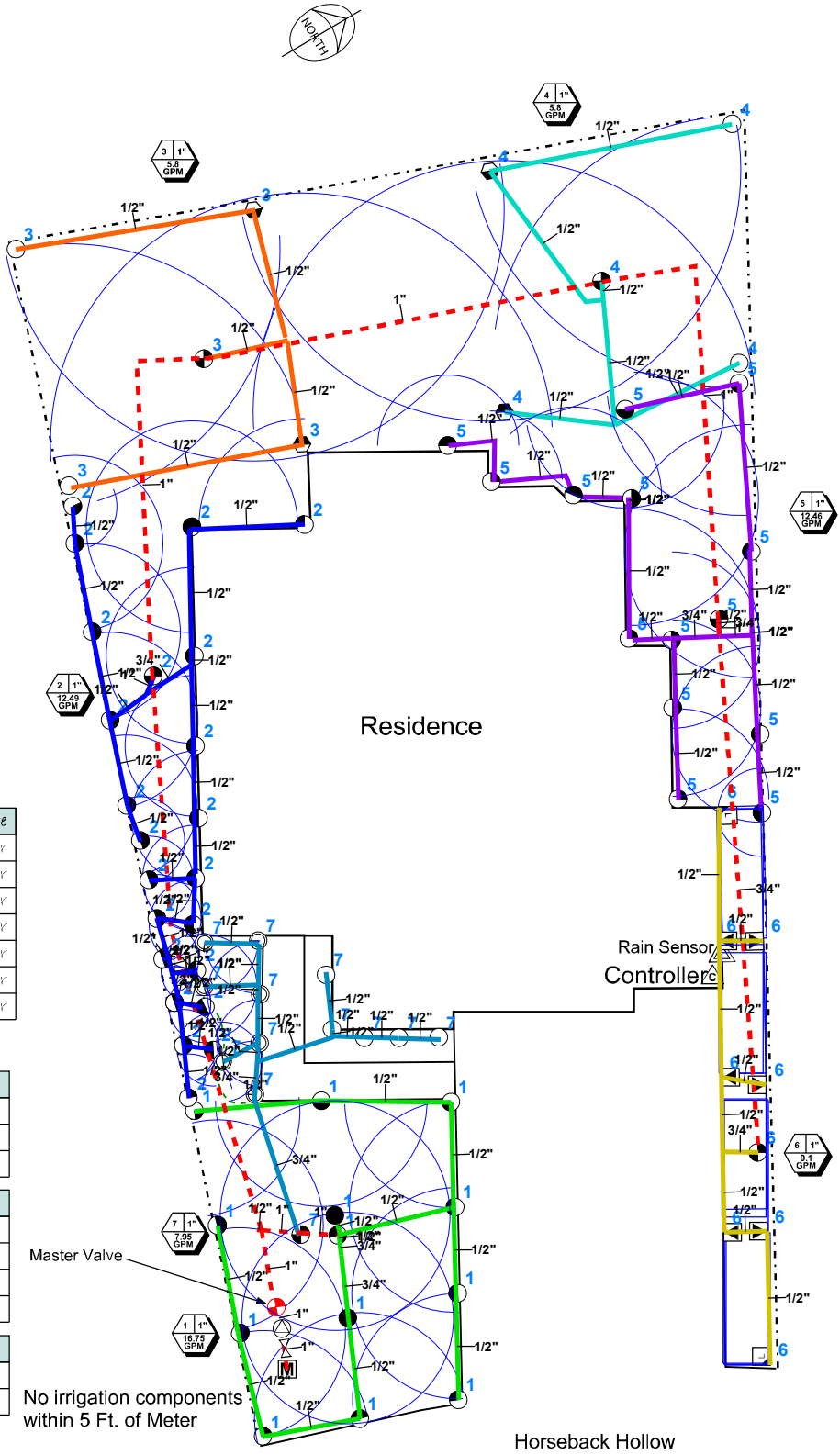
Water Source #1	
Meter Size	3/4 inch meter
Static Pressure	67 psi
Elevation Change	0 ft

**Service Line Information**

Pipe Category	Schedule 80 PVC
Pipe Size	Schedule 80 1 1/4"
Length	4 ft
Velocity	5 fps

**Recommendations**

Maximum Recommended Flow	19.99 gpm
Available Working Pressure	60.17 psi



No irrigation components within 5 Ft. of Meter

SHEET: 1 of 2	SCALE: 1" = 20'	CHECKED BY: KFC	DRAWN BY: K. Farmer L15566	JOB NUMBER: 0100	DATE: 4/27/10	REVISIONS: 5-12-10, 5-16-10
---------------	-----------------	-----------------	----------------------------	------------------	---------------	-----------------------------

**PROJECT:**  
Meritage Homes  
217 Horseback Hollow

**SHEET DESCRIPTION:**  
Irrigation Plan

Farmer's Nursery, Inc.  
1305 Leander Dr.  
Leander, Texas 78641  
512-259-4111